

**INSTRUMENT AERODROME ELEV 4181'
APPROACH
CHART**

**HEIGHTS RELATED TO
THR RWY 04 - ELEV 4172'**

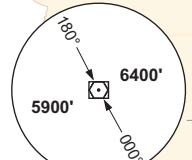
FAMM TWR 119.30
TIBA 124.80

**GEORGE DICK
MONTSHIOA AIRPORT
VOR A RWY 04
CAT A - D**

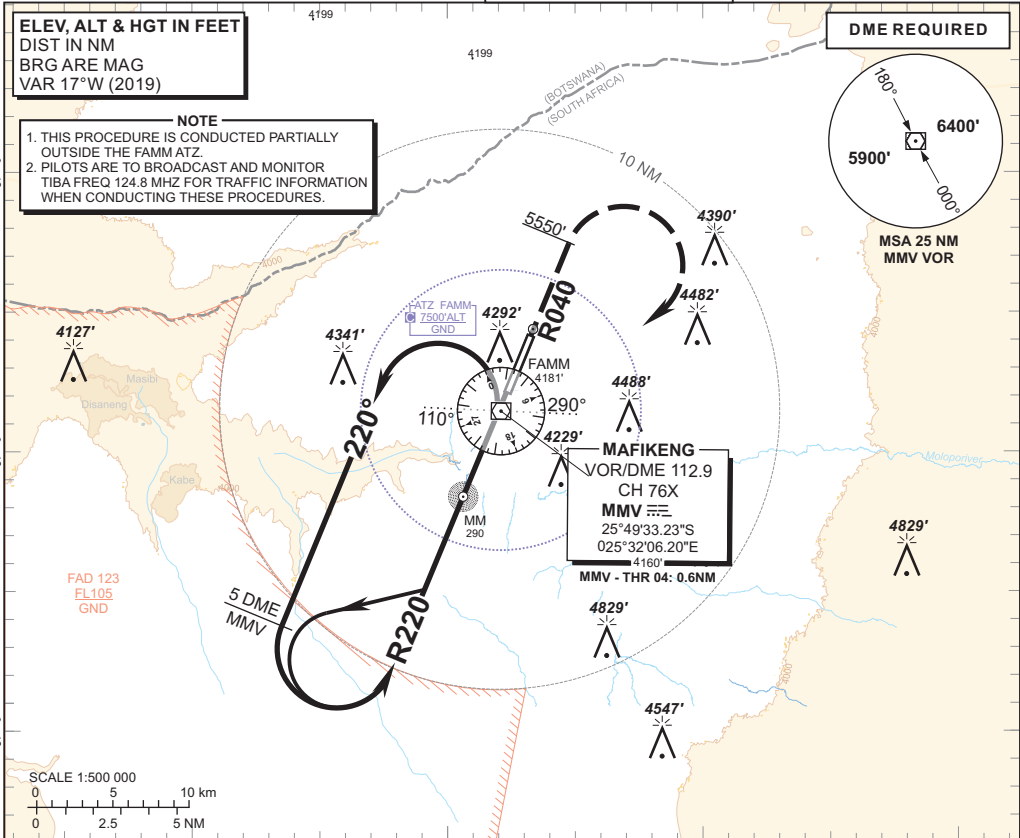
**ELEV, ALT & HGT IN FEET
DIST IN NM
BRG ARE MAG
VAR 17°W (2019)**

DME REQUIRED

- NOTE**
1. THIS PROCEDURE IS CONDUCTED PARTIALLY OUTSIDE THE FAMM ATZ.
 2. PILOTS ARE TO BROADCAST AND MONITOR TIBA FREQ 124.8 MHZ FOR TRAFFIC INFORMATION WHEN CONDUCTING THESE PROCEDURES.



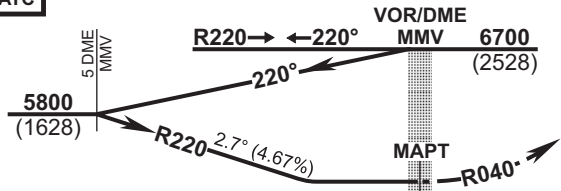
MSA 25 NM
MMV VOR



MMV VOR/DME	5	4	3	2	1
ADVISORY ALT (HGT)	5800 (1628)	5520 (1348)	5240 (1068)	4950 (778)	4670 (498)

**TRANSITION ALT 7000
TRANSITION LEVEL ATC**

INA ALT: 6700



MISSED APPROACH:
Climb on R040 MMV (OUBD) to 5550 ALT. At 5550 ALT turn right to MMV, climbing to 6700 ALT.

THR ELEV 4172
NM to/from THR RWY 04

OCA (H)	GS				KT	80	100	120	140	160
	A	B	C	D						
Straight-in Approach	5 DME MMV - THR				M:S	4:11	3:20	2:47	2:23	2:05
	Rate of descent				FPM	378	472	567	661	756
NOTE:										
1. Procedure turn approach applicable only within 30° of the outbound HDG. Use phraseology "Request procedure turn approach".										
2. Circle to land at the discretion of the pilot in command.										
Circling	Visual circling east of AD only.									

CHANGE: NDB MH Decommissioned